



**Make yourself at home
Accommodation
at Roehampton**

Welcome

This booklet will introduce you to on-campus living and provide you with information about our University accommodation. London is one of the world's most exciting and cosmopolitan cities and as a Roehampton student you will be well placed to make the most out of what the city has to offer. The local areas provide a treasure of social and cultural experiences while the excitement and buzz of Central London is just a short train ride away. You will be joining a community of eight million people where over 300 languages are spoken and we guarantee you will find a place to call 'home' during your stay with us at the University of Roehampton.

Living on-campus

For many of you, this will be the first time you will be living away from your parents, and perhaps the first time you will have to share your living space with more than a few people. You and your flatmates will come from all over the country (and the world), from different backgrounds and with different ideas about how to live; it's a great opportunity to meet new friends and also be close to everything you need at university. Every hall has a Flat Rep, a 2nd or 3rd year student, who is there to guide you in your first few weeks and make sure you are doing ok throughout the year. They will hold regular meetings, set out ground rules and help you learn how to report maintenance issues.

Benefits of living on-campus

- Make new friends easily
- Live in a safe and secure environment
- Feel part of a collegiate community
- Live near classes and facilities
- Know your accommodation costs in advance, and therefore budget effectively

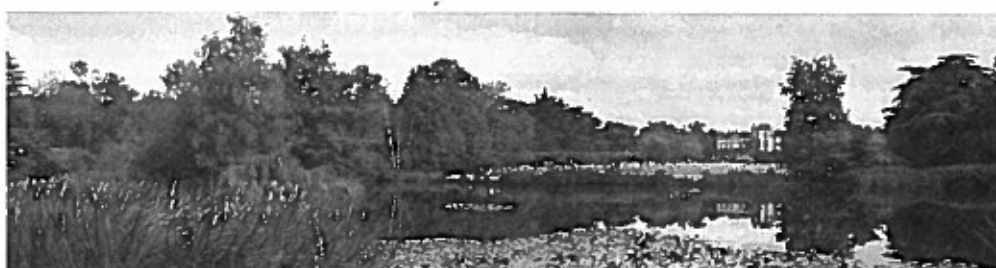
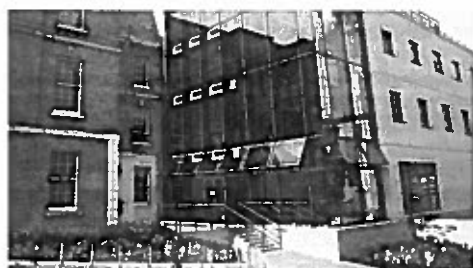
All student accommodation at Roehampton is self-catered. A shared kitchen will be available for you to use in your flat or hall. You can also purchase meals from the dining halls and cafes located across the four Colleges. Common areas of accommodation will be cleaned by domestic staff, but you are expected to clean your own room (including your ensuite bathroom if you have one) and do your own washing up of kitchen utensils, cutlery and crockery.

Listed below is everything that will be included in the cost of your accommodation:

Included in the cost	Items in your room	Items in the kitchen
Contents insurance	Bed	Cooker
Internet connection	Wardrobe	Microwave
Lighting	Desk	Fridge
Heating	Chair	Freezer
Water	Shelving	Kettle
Electrics	Wash hand basin	Toaster
Electrical testing of your appliances		Cupboards
Cleaning of communal areas		*Ironing board and iron **Hoover/Mop/Bucket

In addition you will need to bring with you the items listed below:

For your room	For the kitchen
Bedding	Cooking utensils
Duvet	Saucepan
Duvet covers	Frying pan
Pillows	Cutlery
Pillow cases	Crockery
Bathing towels	Tea towel



Digby Stuart College



Home to:

Drama

English

Humanities

Social Sciences



Room type: S: Standard | sES: semi en-suite
ES: en-suite | P: premium en-suite

Brand new high spec accommodation
Elm Grove Hall



P | Elm Grove Hall: £173.60 per week



S | Bede House: £117.25 per week



ES | Lee House: £149.80 per week



sES and S | Newman House: £138.95–£117.25 per week



ES & S | Shaw House: £149.80–£131.25 per week

Froebel College



Home to:

Dance

Education



ES | Aspen, Linden or Willow House: £149.80 per week



P | Chadwick Hall: £173.60–£168.00 per week



S | Garden Court: £131.25 per week



S | Lawrence: £131.25 per week

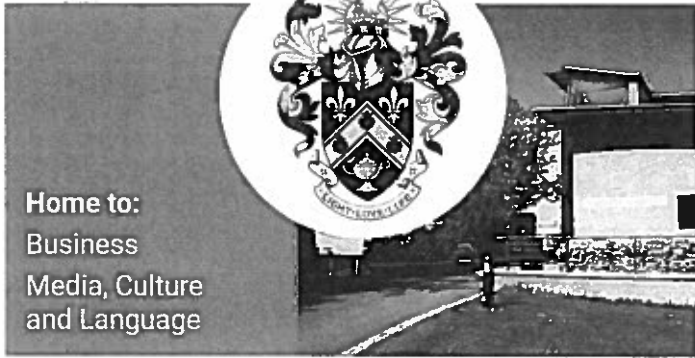


S | New Court: £131.25 per week

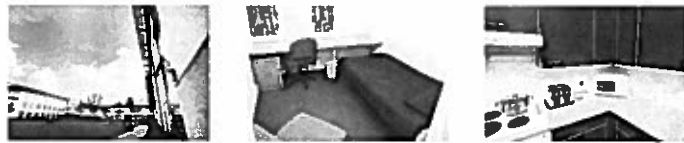


S | Old Court: £131.25 per week

Southlands College



Home to:
Business
Media, Culture
and Language



S | Aldersgate Court: £131.25 per week

S | Epworth Court: £131.25 per week

ES | Wesley Hall: £149.80 per week

Whitelands College



Home to:
Life Sciences
Psychology



ES | Beverley and Cheltenham: £149.80 per week

ES | Durham and Gilesgate: £149.80 per week

ES | Kings and Melrose: £149.80 per week

ES | Sutherland and Walpole: £149.80 per week

Facilities on-campus:

Library

Laundry facilities are located near all the accommodation sites

Cash machines

Gym, sports hall and an outdoor games area for basketball, netball etc

Flat Representatives in each area to help you settle in

Medical Centre

Students' Union, which stages social events and offers welfare advice

24 hour security

Cafeterias, diners and coffee bars

**It's not the type of flat you
choose that makes living on
campus fun, it's your flatmates!**

- Nikhil Patel

The University's four colleges serve as the focal points for the vibrant social scene. On-campus accommodation is centred on the Colleges and there are healthy intercollegiate rivalries in sport and other traditional celebrations. Studying at a collegiate university gives you a sense of community; you are not only part of the University, but will also have an instant identity within the smaller world of the College.

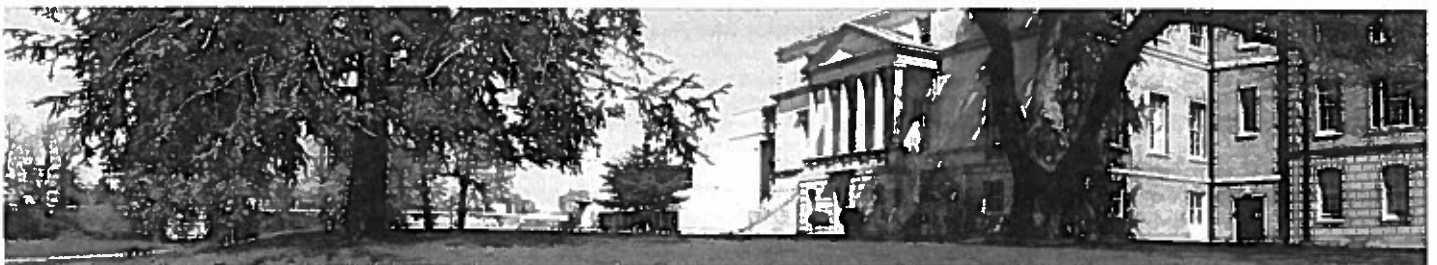
Membership to each College is automatic depending on where you are living and what you are studying.

You will be assigned a College when you begin studying and this depends on two factors. If you live on campus in your first year, then you automatically become a student of the College that your accommodation block is linked too. This is primarily based on location, and when you move in, you'll be welcomed by your College on arrival. This College is yours throughout your degree, even if you move off campus.

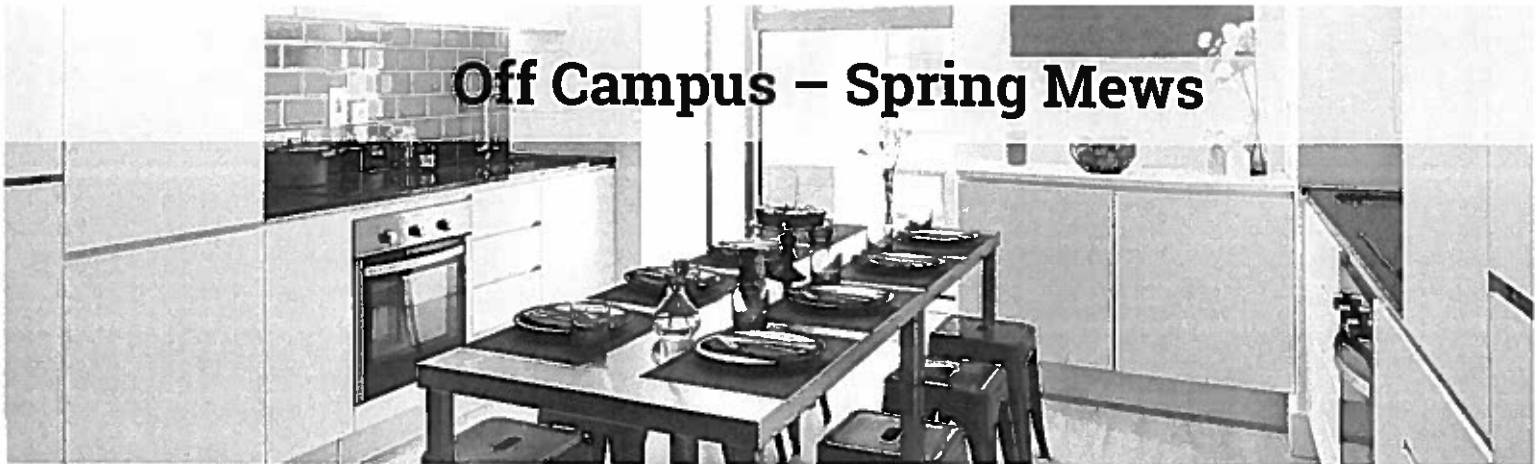
If you don't live on campus don't worry - you're still a member of a College! Your College will be decided by which course you are studying, and will generally be the College in which the majority of your teaching takes place.

We will try our best to accommodate you at the College you request.

Prices shown are for 2017-18



Off Campus – Spring Mews



Stylish ensuite rooms

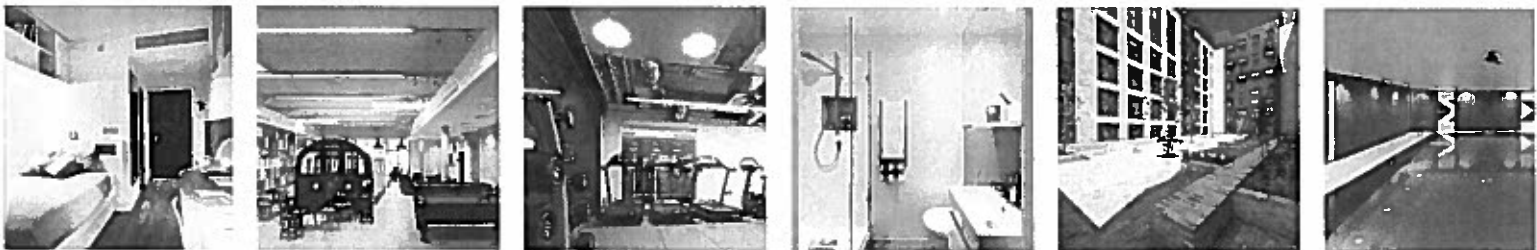
Rent includes: all bills, high-speed internet and contents insurance

Private swimming pool and gym

Active social community with regular events

Fantastic shared spaces including games hub, movie lounge and study rooms

Vibrant location surrounded by shops, bars and attractions



Off Campus – Spring Mews

Spring Mews is the ideal accommodation for students who want the best of both worlds: To study at the best modern University in London and to enjoy the unique experience of living in the centre of one of the world's most exciting cities!

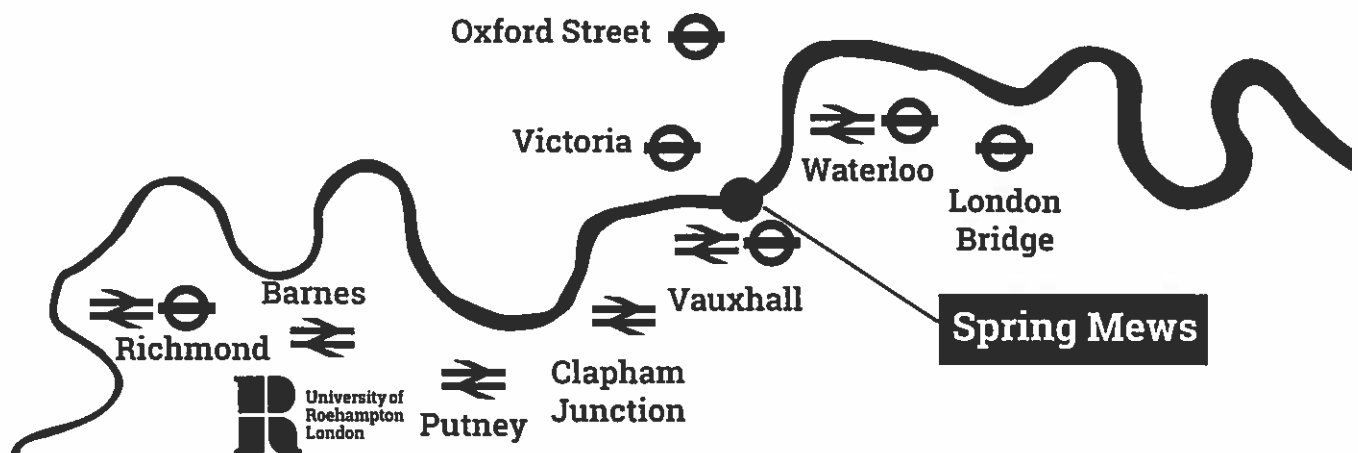
Located near the banks of the River Thames in trendy Vauxhall, you will have a range of cool bars, cafes and attractions at your doorstep as well as one of London's prime transport hubs. You'll be close not only to campus, but to the social, cultural and job opportunities that London has to offer.

Each stylish en-suite room has spacious work areas, plenty of storage and even a heated towel rail! While living at Spring Mews,

you don't need to worry about a thing. Your rent includes ALL utility bills, uncapped high-speed internet and contents insurance. There is also a free parcel collection service, 24/7 laundry room and plenty of bike storage.

It is often said at university you will make friends for life, and at Spring Mews you are likely to meet them making a cup of tea in the high spec communal kitchens or one of the several fantastic social areas which include a games hub, study room and movie theatre. You can also unwind in the amazing on-site swimming pool or improve your fitness at the Spring Mews gym. You will never be bored living at Spring Mews!

For prices, offers and more information please contact accommodation@roehampton.ac.uk or search for Spring Mews Roehampton.



Making an application for on-campus accommodation

In order to apply for on-campus accommodation you must have a firm offer from the University of Roehampton. All full-time and part-time students will be eligible to apply for on-campus accommodation. Part-time students will be expected to accept full-time tenancies.

Choose your accommodation

You can view the wide choice of accommodation available at www.roehampton.ac.uk/Accommodation/On-Campus (Subject to availability).

Guaranteed rooms

Applications for accommodation usually open at the start of February. Guaranteed accommodation is available to the following categories of students:

- New full-time undergraduate students, who have Roehampton as their first choice through UCAS, make an application on or before the end of May.

Room offers

- Most offers will be sent out after A-level results in August. Offers are sent by email and need to be replied to within one week (five working days).
- You will need to pay a £250 deposit to accept your room and set-up a payment plan for your accommodation fees.

Payment of fees

On-campus fees will be taken at the beginning of every term after you have received your student loan (UK student loan). If you need to organise a monthly payment plan or your loan is delayed, please contact accommodation finance (accommodation@roehampton.ac.uk).

Quick step guide:

1. Apply for on-campus accommodation after you have made Roehampton your FIRM choice
2. Around results day you will receive an email to secure your on campus room
3. Pay your deposit of £250 within five working days of receiving accommodation offer email
4. Pay your accommodation fees in full or set-up a payment plan for the start of each term
5. Look out for information on arriving to Roehampton

Budgeting

How much you spend on living expenses will, to a large extent, depend on the kind of lifestyle you choose and where you live. You will need to budget for food and drink along with items such as books, travel, mobile phone, entertainment, clothes, laundry fees and other household expenses.

Accommodation contracts

You are required to sign a licence agreement online for your accommodation. This is a legally binding document that commits you to the room financially for the period stated. You will only be released from your contract if you withdraw from the University or you find another suitable student to fill your room.

Take virtual tours and find out more information online:
www.roehampton.ac.uk/accommodation

Email: **accommodation@roehampton.ac.uk**

Telephone: **020 8392 3166**